

Neat Tools You Can Make #5

Key Stamping Block

©Eugene Hansen Feb 2005

In this installment we will construct a stamping block that clamps the keys for alignment and to keep them from bouncing off the counter. List of materials used: 8" x 3/4 x 3 1/2 flat plate steel (you can use heavier or lighter material if you so chose), 8" x 3/4 angle iron, (2) 1/4 x 20 thread eye bolts 1" long, (2) springs, (2) 1/4 x 20 thread nuts, strip of self sticking Gasket material. Tools list: hacksaw, angle grinder or flat file, drill bits, tap set, Drill (press preferred), & tape measure. With this tool you can stamp 6 keys at a time on a line, then reset and stamp a second or third line. You can add a ruler to the top to mark out the spacing.



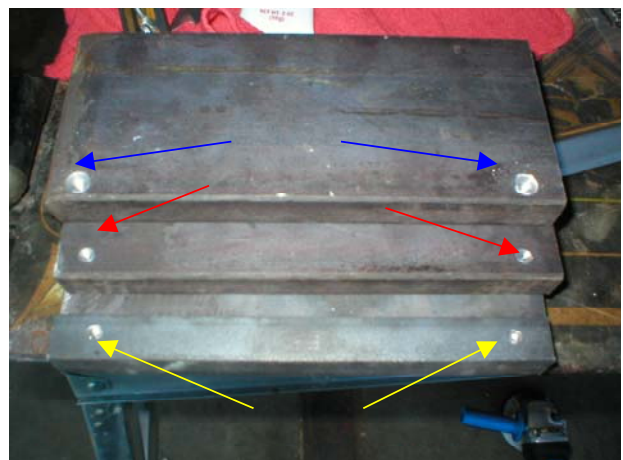
Tools used; hacksaw, angle grinder or flat file, drill bits, tap set, Drill (press preferred), & tape measure.



Clamp angle iron on the flat plate to start your holes so they match up. As you drill the holes only drill far enough to mark the base plate. Mark the locations for the pilot holes by drilling until it starts drilling on the base plate.



Materials used; 8" x 3/4 x 3 1/2 flat plate steel (you can use heavier or lighter material if you so chose), 8" x 3/4 angle iron, (2) 1/4 x 20 thread eye bolts 1" long, (2) springs, (2) 1/4 x 20 thread nuts, strip of self sticking Gasket material. (Note: I replaced the standard bolts with eyebolts to allow easier tightening and removal of key blanks.)



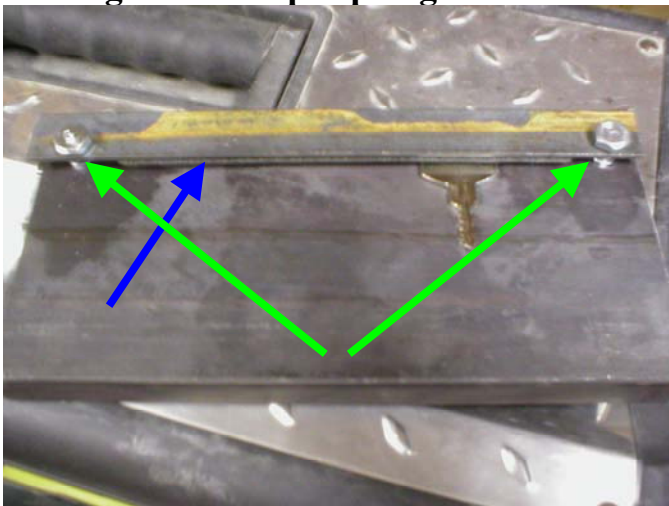
Yellow arrow 1/4 inch holes, Red arrow 7/32 inch for tapping 1/4 x 20 threads, Blue arrow 3/8 hole for recessing spring.



Tap the holes for 1/4 x 20 thread notice the recessed hole for allowing the spring to seat



Spring is cut the heavier springs to about 1/3 the length to allow the angle iron to be shoved back up to release the key blanks, making the "clamp" spring loaded.



Gasket material (blue arrow) added to the angle iron (bolts used on this plate were later swapped out for eyebolts, springs

(Green arrow) are compressed under the angle iron and in the recessed wholes.



Key extended for stamping different depths (you can stamp more then 1 line of text.)



Completed block with holes for mounting and strip of gasket material on the angle iron to help hold the keys, strip of plastic ruler lay on top to allow alignment. Use some felt or something on the bottom of the base plate to keep from marking your counter top even if you plan on bolting it down. (You may want to move it sometime).

☺Make Money☺Be Happy☺